

Zonal Education Office - Thenmaradchy

Unit exam -Science

Grade - 11

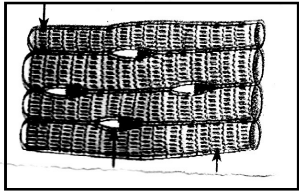
Unit - 1

Time - 40 minutes

Part - I

Underline the most suitable answer

01. In which of the following surface epithelial tissue is not found?
1. wall of urinary bladder
2. wall of intestine
3. wall of heart
4. wall of blood capillaries
02. Which one of the following set of cells found only in phloem tissue?
1. Sieve tube elements, sieve tube cells
2. Parenchyma cells, Tracheids
3. Companion cells, Tracheids
4. Tracheids, Sieve tube cells
03. Following picture represents a muscle tissue.
Which of the following indicate the type of this muscle tissue and its function?



Type of tissue	Function
1. Cardiac muscle	Voluntarily controlled
2. Skeletal muscle	Involuntarily controlled
3. Skeletal muscle	Voluntarily controlled
4. Cardiac muscle	Involuntarily controlled

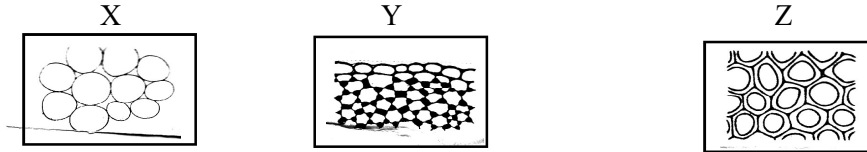
04. A cell belongs to xylem tissue has the following features.
A - The cell wall is thin
B - It has the ability to store food
C - It is a living cell
The cell is
1. xylem vessel 2. Tracheids 3. xylem parenchyma 4. Fibres
05. Which one of the following is a reason for considering blood as a connective tissue?
1. It consists of many cells.
2. The white Blood cells destroy foreign bodies by phagocytosis.
3. The fluid matrix is not secreted by blood cells.
4. Blood clotted during the formation of wounds.
06. Which one of the following is not a living cell?
1. Fibres 2. Companion cell
3. Sieve tube element 4. Xylem parenchyma
07. Which one of the following is not a feature of meristematic tissues?
1. Cells having distinct nucleus
2. Cells having large number of mitochondria
3. Having no intercellular spaces
4. Cells having large number of chloroplasts.
08. Which one of the following part of neuron, increases the speed of transmission of impulses?
1. Node of Ranvier 2. Axon
3. Myelin sheath 4. Dendrites

09. Which one of the following tissue found in the seed coat of dates?
 1. Parenchyma
 2. Collenchyma
 3. Sclerenchyma
 4. none of the above
10. Which one is not a feature of a muscle which controlled voluntarily?
 1. Shows rhythmic movement
 2. Having multinucleate cells
 3. Having striation
 4. Unbranched

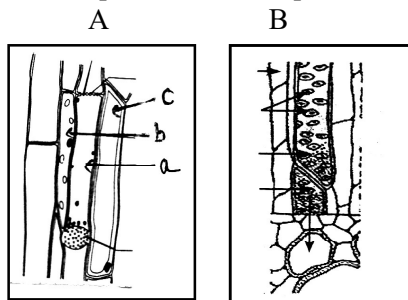
Part - II

Answer all questions.

01. A. The following diagrams show the cross sectional areas of some plant tissues

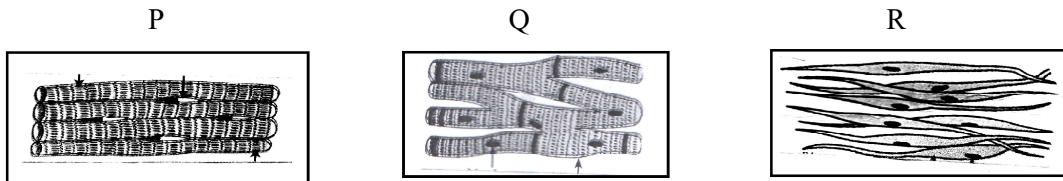


1. Identify X, Y, and Z?
 2. Identify the tissues mentioned above having the following feature. (In your answer you should use Z, Y, or Z.)
 - a. The corners of the cell walls are thickened.
 - b. cell wall is thin and having uniform thickness.
 - c. Non living.
 - d. Cell wall made up of cellulose and lignin.
 - e. Having isodiametric spherical shoped cells.
- B. Tissues responsible to transport substances in plants are given below.



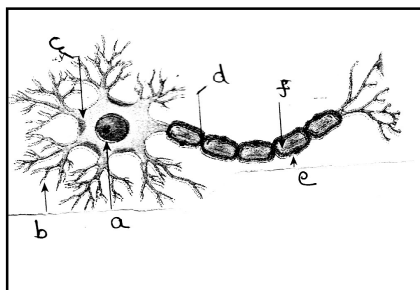
1. Identify the tissues A and B?
2. Give the major functions of A and B?
3. What are the types of cells found in tissue B?
4. Identify a, b and c in tissue A?

02. A.



1. Identify the muscle tissues P, Q and R?
2. Which muscle tissues are striated?
3. Which muscle tissues are involuntarily controlled?
4. What muscle tissues having single nucleus?
5. Which muscle becomes fatigue easily?
6. Give two parts where the muscle P found?

B.



1. Identify the above structure?
2. Identify a,b,c,d,e,f and I?
3. What are the two major parts of the above cell?
4. Give the functions of b and f?
5. What is the structural unit of neruous tissue?