

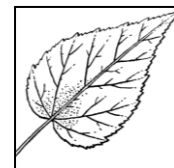
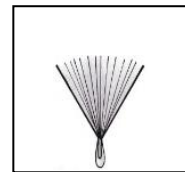
**Jaffna Zonal Education Office**  
**Term-1,**  
**Unit Exam-01 ( Plant Diversity)**  
**Science**  
**Part-1**

**Grade 7**

**Time- 40 min**

**Underline the most appropriate answer**

1. Which of the following is a non-flowering plant?  
 i) Long bean    ii.)Coconut    iii.)Pinus    iv.)Water lily
72. Which plant has tap root?  
 i) Arecanut    ii) Mango    iii) Grass    iv) Kitu
3. Which is the special type of root found in Orchid plant that absorbed the water vapour from atmosphere?  
 i) Slit root    ii) Respiratory root    iii) Prop root    iv)Aerial root
4. Which is the correct function related to Bryophyllum (Sadaikaraichchan) leaf?  
 i) Carry out photosynthesis    ii) Store water    iii) Vegetative reproduction    iv) All are correct
5. Which is the plant stem carry out the photosynthesis?  
 i) Kally    ii) Mango    iii) Jak    iv) Moringa
6. The dispersal method of given seed is  
 i) Air ii) Animal    iii) Water    iv) Explosive Mechanism
7. Which plant shows the hypogeal germination?  
 i) Beans    ii) long bean    iii) Coconut    iv)Tramarind
8. Which of following is not included in the gynoecium of flower?  
 i) Stigma    ii) Anger    iii) Style    iv) Ovary
9. Which is not an example for underground stem?  
 i) Potato    ii) Ginger    iii) leeks    iv) Manolic
10. Which is the correct statement regarding the leaf given in the diagram?  
 a) Serrate (Tooth like) leaf margin  
 b) Parallel venation  
 c) Reticulate venation  
 i) a,b    ii) b,c    iii) a,c    iv) a,b,c



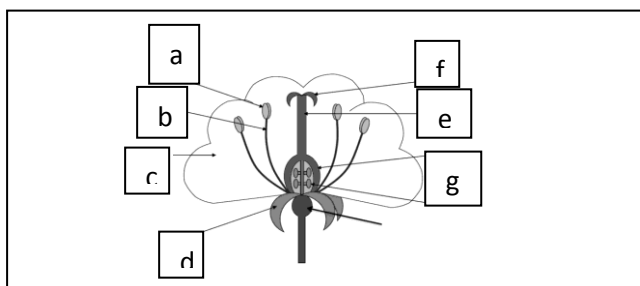
**(20marks)**

**II) Mark ( ) or (x) for the following statements**

- i) Underground stem that grows inside soil can be carried out the photosynthesis (    )
- ii) Water-soaked beans seed can be divided in to two because they have two seed lobes (    )
- iii) Flowers that bloom at night are white. (    )
- iv) Slit root is found in Pandanus (    )
- v) Respiratory root is not found in kinnai(    )

**(20marks)**

I) A . The plants that found in our environment can be classified based on their characteristics .



- i) What are the main types of plants that based on produce flowers?  
 i)..... ii).....
- ii) a) Name the parts A to G in flower that shown in the figure.

**(2 marks)**

**(8marks)**

b) Which English letters denotes androecium shown in the figure (2marks)

c) Write the function of the following parts of the flowers. ( 8marks)

i) Petal : .....

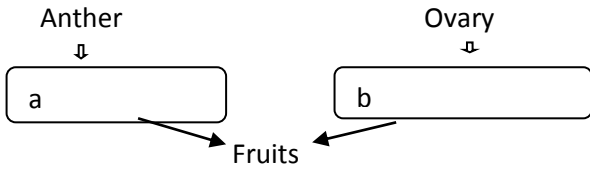
ii) Sepal: .....

iii) Stamen: .....

iv)Ovary: .....

B I) Fruits are formed from the flowers of flowering plants. Seeds produce new seedlings.

i ) Name a and b that participate in fruit formation



(4marks)

2) Fill the table using the dispersal method of fruits and seeds.

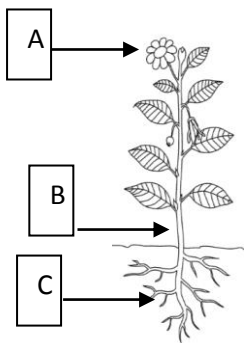
(12marks)

Fruit/ seed	Dispersal method	adaptation
Erukalai		
Coconut		Float on water
Pulinagam		
Castor	Explosive mechanism	

II) i) Name the plant parts a,b and c as shown in the diagram.

(3marks)

ii) Compare the differences between monocot and dicot according to the above features a,b and c ? (9marks)



part	monocot	dicot
A		
B		
C		

iii) Mention two plants that stored food in root?

(2marks)

.....

iv) Write two main function of plant stem?

(4marks)

.....

v) Underline the following plants that contain compound leaves.

(Coconut, papaw, Agathi, Puvarasu)

(4marks)

B) Fill in the blanks using the correct words.

(1) ..... structure can be seen in the root system of mimosa plant. Micro-organism called (2) .....live in this structure. Group of micro-organism supplies (3) required for the growth of mimosa plant and micro-organism get (4).....from mimosa plant. This symbiotic method is found in family (5) .....

(10marks)

