

# JAFFNA ZONE

SCIENCE

UNIT EXAM -01

GRADE-6

## Underline the suitable answer

1. Which of the following as a living organisms

- 1) Stone      2) Student      3) Book      4) Pen

2. Which of the following is not a common characteristic of living organisms

- 1) Growth      2) Movement      3) Respiration      4) Photosynthesis

3. The most suitable equipment to observe the microorganisms

- 1) Telescope      2) Compound microscope      3) Magnifying glass      4) Binocular

4. The animal that cannot show the locomotion.

- 1) Fish      2) Snail      3) Sea anemone      4) Deer

5. Which gas is produced in during respiration

- 1) Carbon dioxide      2) Nitrogen      3) Argon      4) Oxygen

5×3=15

## Fill in the blanks with suitable words

[Water, sunlight, carbon dioxide, green plant, photosynthesis]

most .....produced food by

using.....from air, soil

.....and ..... This process is called.....

5×3=15

## Put true or false

- 1) Green plant show locomotion [      ]  
2) Carbon dioxide gas change the colorless lime water in to off white [      ]  
3) A matured living been producing new members of the same species is known as reproduction [      ]  
4) Chili plant is a autotrophic plant [      ]  
5) Stem is a main part for doing photosynthesis [      ]

5×3=15

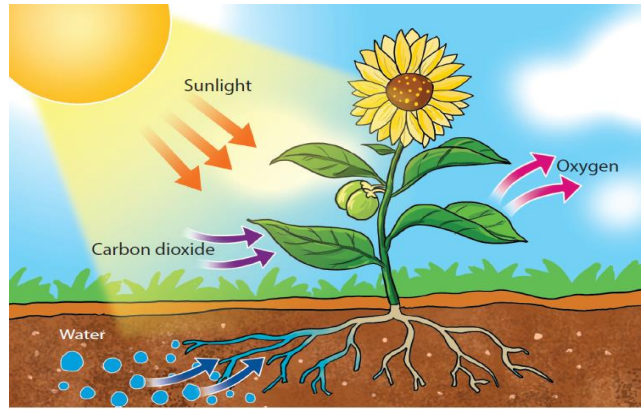
## Match them

- |  |                     |
|--|---------------------|
| 1) The process that creates energy in organism       | Carbon dioxide      |
| 2) The instrument that used to observe microorganism | Oxygen              |
| 3) Sleeping movements in leaves in the evening       | Compound microscope |
| 4) The gas used in respiratory process               | Respiration         |
| 5) The gas used in photosynthesis                    | Movement            |

5×3=15

## Part II

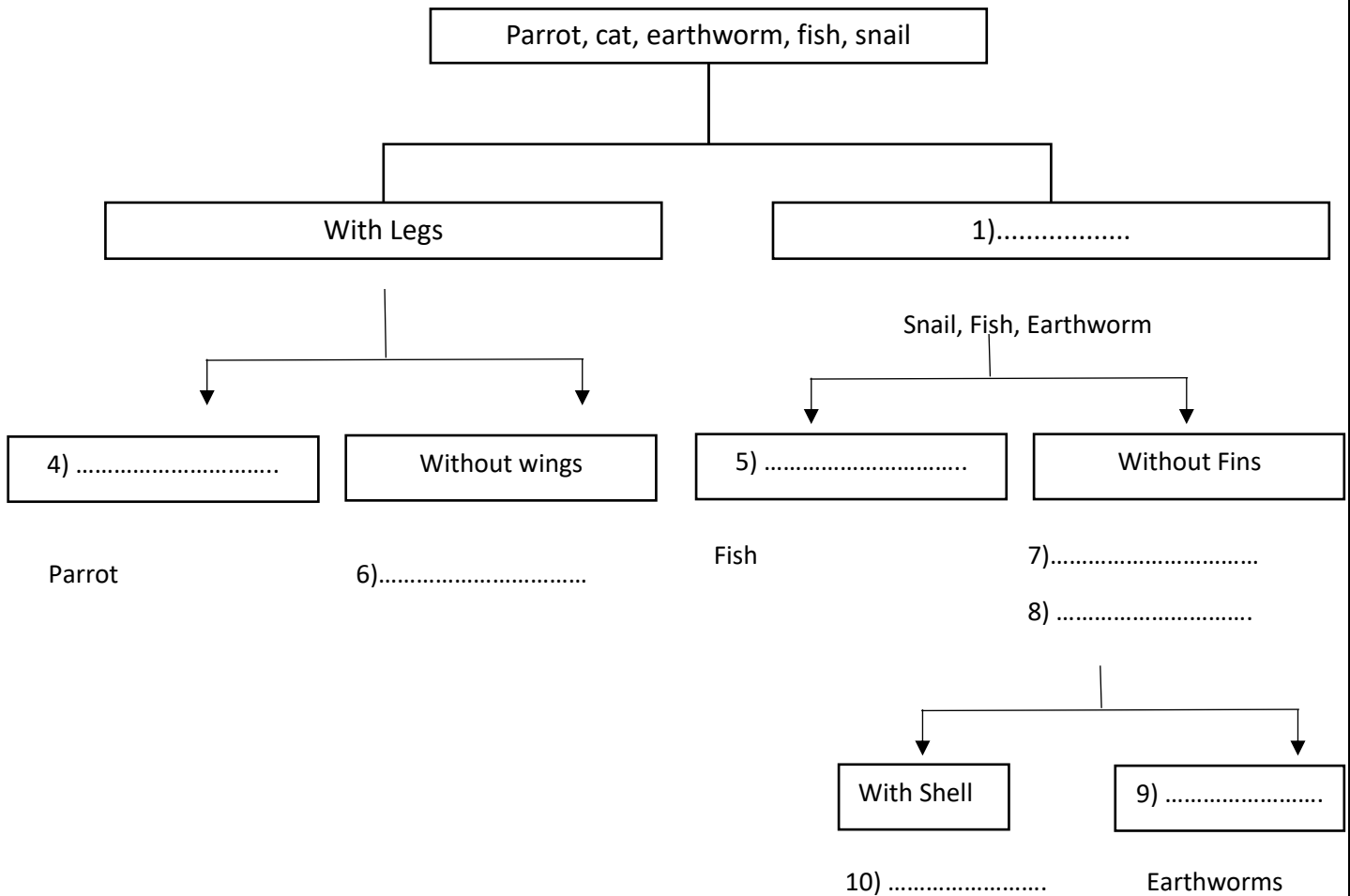
Answer the following question by using the picture



- 1) Name the process shown by above figure
- 2) Which energy is use here to above process?
- 3) How to get the water for the above process?
- 4) Name the substances present in leave that used for above process?
- 5) State one important of above process

**5×4=20**

Complete the following dichotomous key



**10×2=20**

# JAFFNA ZONE

SCIENCE

UNIT EXAM-02

GRADE-6

## Underline the suitable answer

- 1) Which of the following have not mass  
1) Air                      2) Electricity                      3) Ice cube                      4) Water
- 2) The volume of the liquid show here  
1)10ml                      2)11ml                      3) 9ml                      4)12ml
- 3) Which of the following occupies the shape of the container  
1) Ice cube                      2) Kerosene                      3) Wooden block                      4) Stone
- 4) The property of the substance that used to make gloves is  
1) Brittleness                      2) Hardness                      3) Elastic nature                      4) Malleability
- 5) Which substances is most suitable to be drawn in to tin wires  
1) Rubber                      2) Graphite                      3) Iron                      4) Diamond



5×2=10

## Fill in the blanks with suitable words

[Gold, diamond, sand paper, light, air]

1. .... is an example for energy  
2. .... occupies the whole volume of container  
3. .... has more hardness  
4. .... used to make jewelry  
5. .... has rough surface

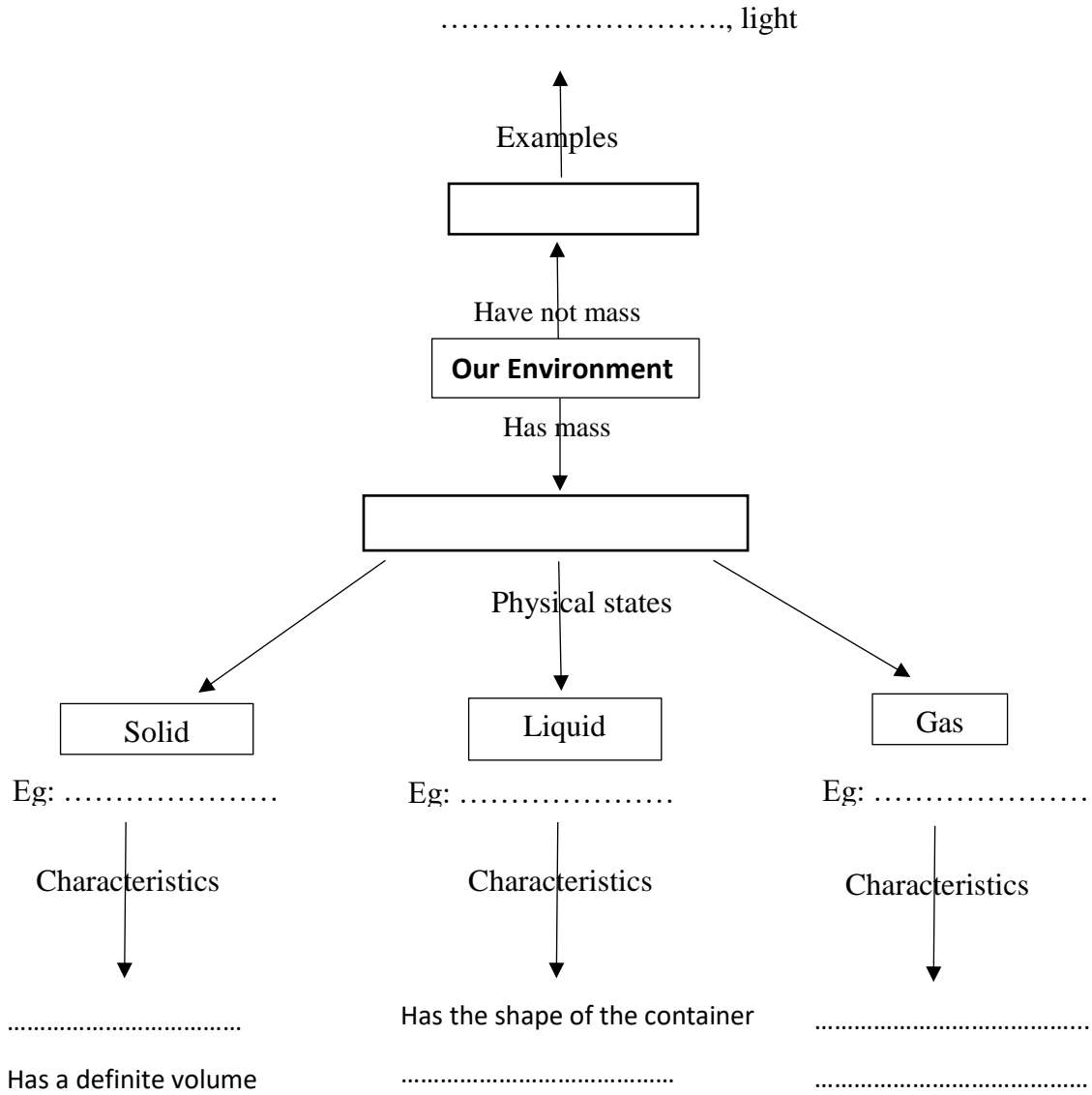
5×4=20

## Put true or false

- 1) Air has mass                      [       ]  
2) Electricity occupies space                      [       ]  
3) Gases have not definite volume                      [       ]  
4) Talc powder has smooth texture                      [       ]  
5) Metals have the abilities of and malleability                      [       ]

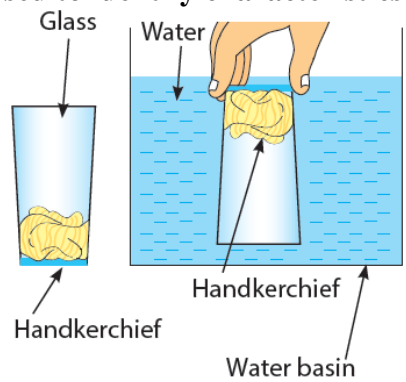
5×2=10

**1. Complete the following blanks**



**10×4=40**

**2. The following figure used to identify characteristics of gas.**



- 1) Write one example of solid, liquid and gas denoted by given figure.
- 2) Take out the glass vertically from the water basin. What is the observation in the handkerchief?
- 3) When turn the glass slidely in the sideway what is your observation?
- 4) What is the reason for above observation?
- 5) Takes out the glass inside way, what is the observation in handkerchief?
- 6) Writes the conclusion of the above activity

**20 Marks**

